

OUTLOOK NOTIFY

1.0.0.8

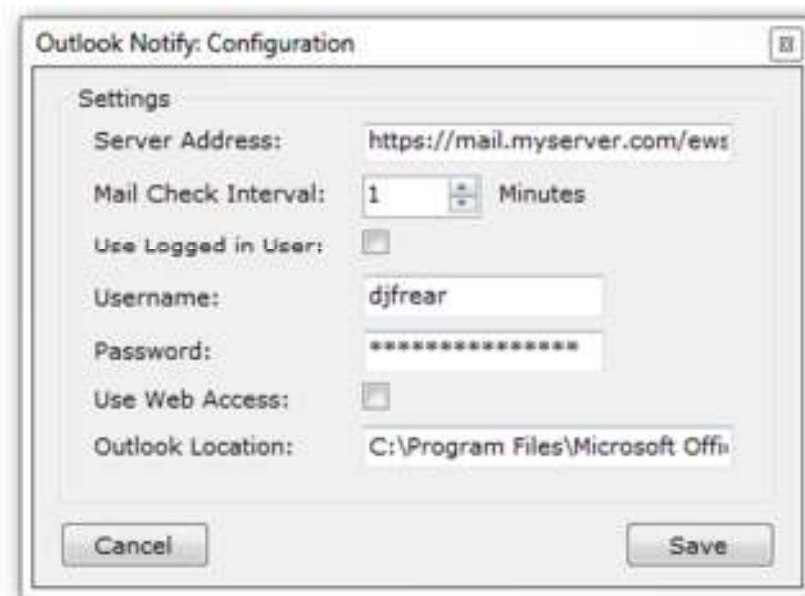
By Daniel Frear

Outlook Notify 1.0.0.8

Requirements

- Exchange Web Services running on Exchange 2007 or 2010. The program **WILL NOT** function without access to this. You will need to be able to access the server as follows:
<https://mail.myserver.com/ews/Exchange.asmx>
- Outlook Client installed or suitable Web Access.
- .NET Framework 3.5
- Windows 7, Vista, Server 2003 or Server 2008 – *may work on XP but untested.*

Configuration



Server address:

This must point to a server in the following format: <https://mail.myserver.com/ews/Exchange.asmx>

Without access to the EWS service, this program will not function.

Mail Check Interval:

The amount of time between checking for new mail.

Use Logged in User:

Whether or not the program should use the currently logged in Windows username and password to access mail. This is normally used on a LAN.

Username & Password:

Your username and password, if not using “use logged in user”. Please note, as of version 1.0.0.8 these are stored in *plain text* and as such, I would NOT recommend using this program on a shared computer.

Use Web Access:

If this is checked, you may enter the web address (URL) to your Web Access instead of the Outlook location.

Outlook Location:

This will only appear if Use Web Access is not checked. This is the entire path to your Outlook client, normally something like this – C:\Program Files\Microsoft Office\Office14\OUTLOOK.EXE. Yours may be different so check this.

Usage

Upon running the application, an icon will sit in the system tray. If you have unread emails upon launching the program, it will tell you how many (max. 30). The program will not notify you of those emails again.

The next time a new email lands in your inbox, the program will notify you of its arrival and provide you with the name of the sender. Should it happen that your inbox receives more than one mail item in between the allocated checking interval, the program will tell you exactly how many but only tell you the sender of the *last received email*.

Clicking on a notification will open Outlook or your chosen Web Access URL. Double clicking on the icon when a notification is not visible, will display the program’s GUI and allow you to enter configuration details or close the application.

Please note, those wishing to run the application in a server environment wherein the application will be used by **more than one user** must purchase a licence. Licences are charged at £2 GBP per user and are for lifetime usage, no recurring payments.

Please contact us via <http://www.oscwork.com> to arrange a licence.

Single user usage, is free of charge.

Turning off Outlook 2010 Notifications

You probably don’t want both notifications, turning off Outlooks own notifications is as easy as going to File, Options, Mail and disabling “Display a Desktop Alert” by removing the check from the checkbox.

Settings File (Advanced & Server Mode)

The settings file **must** look like this:

```
serveraddress=https://mail.yourserver.co.uk/ews/Exchange.asmx
checktimer=60000
useloggedinuser=true
username=
password=
outlooklocation=path_here
usingwebaccess=false
servermode=true
```

The configuration file should not be modified manually apart from setting the final parameter – servermode. If this is set to true, the configuration file cannot be modified from within the program.

If the program is to be used in server mode, it is suggested that an Administrator run the program, configure it appropriately and then manually edit the settings.ini file to servermode=true. Doing so will disable the configure button within the application.